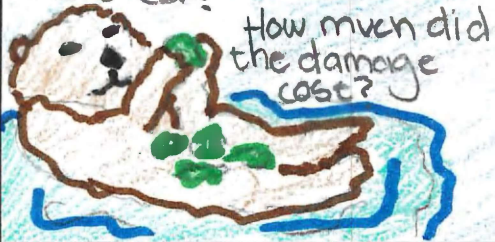


Questions

How were the animals affected?



How much did the damage cost?

~ Quotes ~

"A fire that started Thursday at the world's largest battery energy facility in Moss Landing is no longer burning. On Monday fire fighters confirmed the fire was out." (4)

"The fire burned so intensely that county health leaders say air toxins released from the 350-thousand-powder battery facility, including hydrogen fluoride, stayed low to the ground and did not go up..." (1.5)

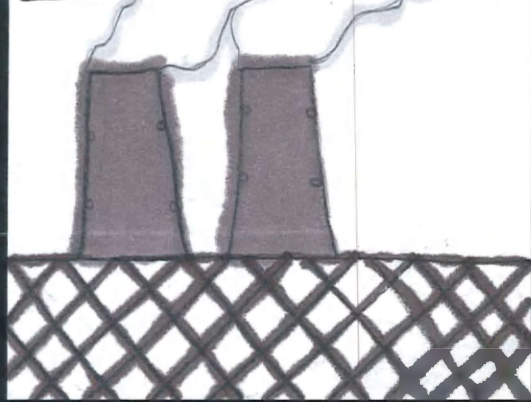


Main Idea

The main idea of what happened at the Moss Landing power plant was that there was a fire and it affected many. Many of which were people who had no idea there are lithium batteries. Not only people but the environment and ecosystem were also.



"A fire that started Thursday at the world's largest battery storage facility in Moss Landing."



"No injuries have been reported but residents raised concerns about hazardous gases being released into the air."



Moss Landing Fire

Main Idea: The fire affecting the people, animals and agriculture.



was the drinking water and water from the ocean affected?

was the agriculture affected by the toxic gas being released in the air?

BATTERY PLANT FIRE

"Lithium batteries make the power grid more stable and reduce the need for energy to be generated from fossil fuels, which release planet-warming gases"

Summary:

This power plant effected many people and still insnt gonna be shut down. It released bad gases that has affected lives.



"Wake up call for this industry."

Questions

- why did they put a power plant so close to us?
- What are they doing to make sure this never happens again?

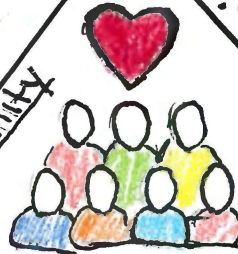


Lithium-ion batteries

GLOBAL WARMING



COMMUNITY



VICTORIA ENERGY



HEALTH HAZARD

SHUT IT DOWN!



FIRE RISK



POWERLESS



Quality



AIR



"There are a lot of really powerful forces in this state and in this country that want to see these batteries in place and going out here... and we dont really matter."

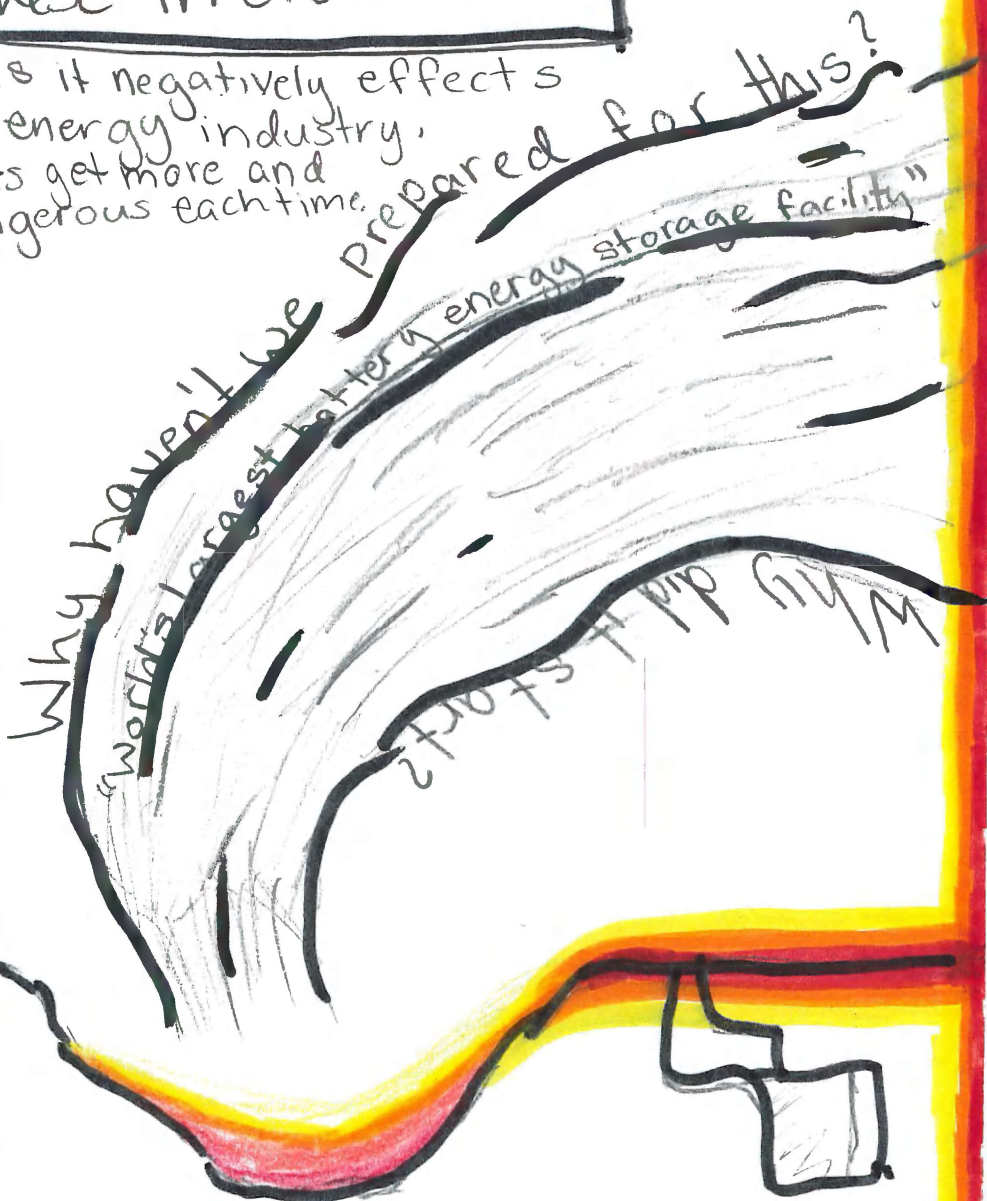
"Hydrogen fluoride gas can irritate the eyes, mouth, throat, lungs and nose, and that too much exposure to the gas can be deadly"

Our Backyard

"There are a lot of really powerful forces in this state & in this country that want to see these batteries in place and going out here... and we don't really matter" - Supervisor Glen Church

Confusion
We need better
Technology & preparation
for these incidents.
Fear

As much as it negatively effects the clean energy industry, these fires get more and more dangerous each time.



QUOTE: Local officials are currently advising residents of Monterey County to stay indoors.

What it did is that it affected homes, schools, jobs, and lives.



main idea: what is the

MOSS Landing

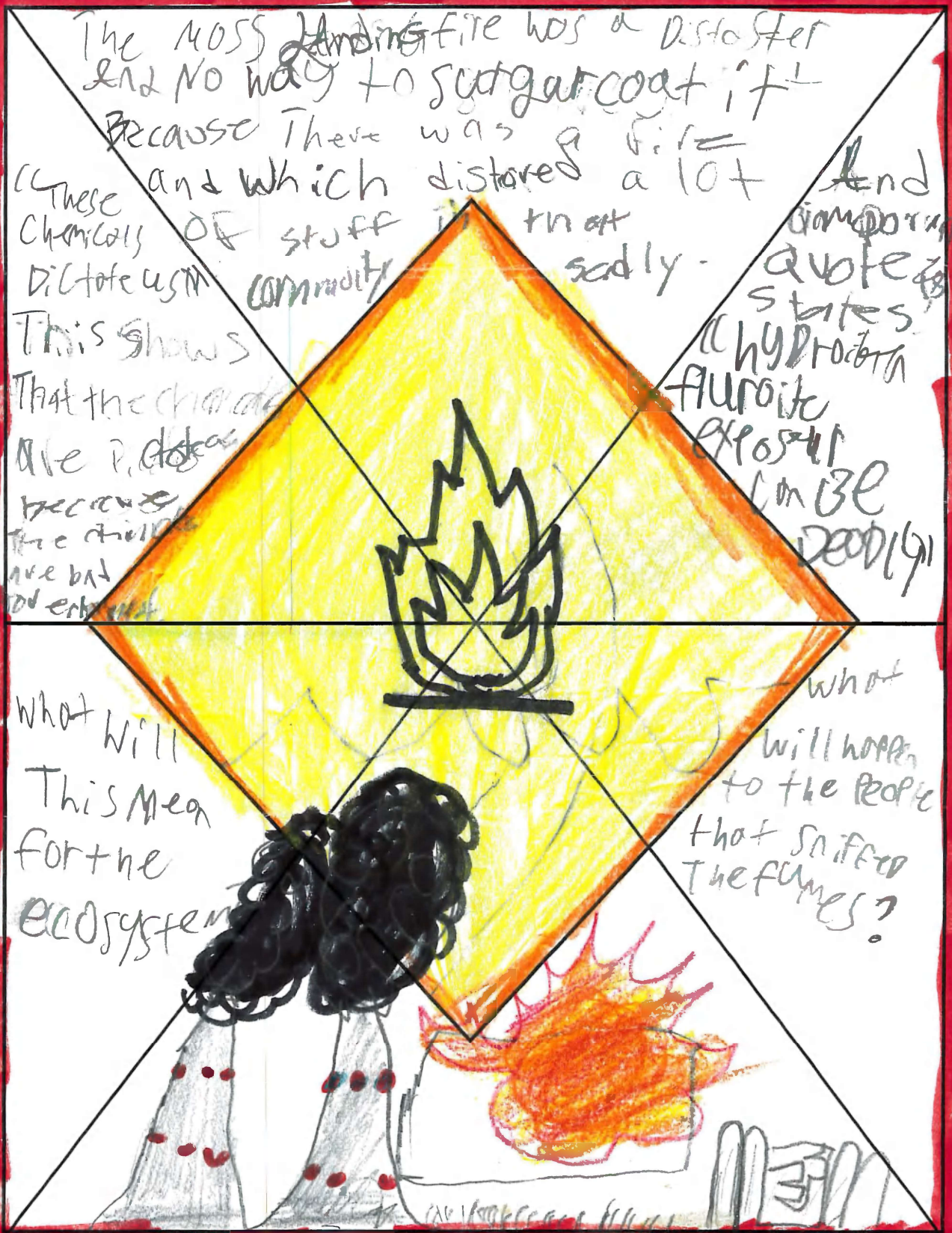
and what did it do

it is a fire at the world's largest battery plant located in Moss Landing California.

NOTE: A fire at world's largest battery plant in northern California.



MOSS Landing Fire



DEADLY



ELECTRICITY

"But the batteries are nearly all lithium..... meaning it can catch fire and burn very hot, releasing toxic gases."

The Moss landing fire was dangerous.

MOSS LANDING FIRE

Can this happen again?

"A fire started Thursday at the world's largest battery energy storage facility in Moss landing."



TOXIC

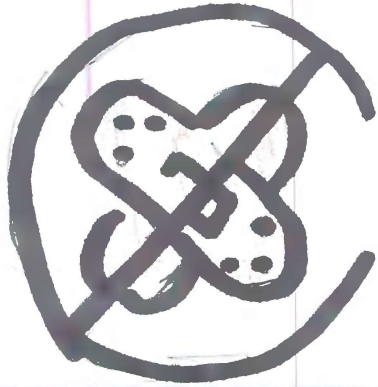
What caused the fire??



FIRE

BATTERY

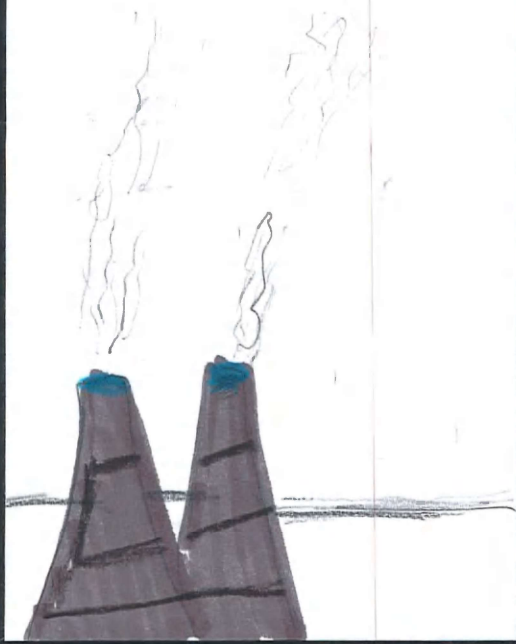
"NO injuries have been reported but residents raised concerns about hazardous gases being released into the air."



"A fire that started Thursday at the world's largest battery energy storage facility in Moss Landing is no longer burning."



MOSS LANDING FIRE



How did it start?

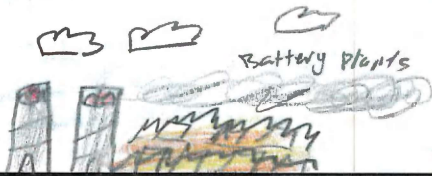
Was the Agriculture affected by the toxic gas?

The main idea was about the fire affecting the community

Main Idea

The main idea is about the fire at Moss Landing that broke out on Thursday. It was bad since it was near Castroville and Moss Landing and other places near.

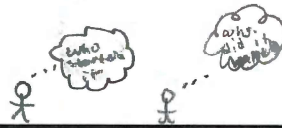
It was an unexpected fire and the people at the community were warm from the air that was coming out from the flames.



My Questions

My question is why do we need these power plants and batteries plants?

Who started it



The Fire at Moss Landing!



Community

The community was upset about the fire since it affected them and spoke out about it in a conference they held.

The community was upset it also harms the people, animals and the air and also the soil.



My other Questions

Why weren't the field workers noticed by it?

How many people get mad or upset?



QUOTES

"I could taste it in my mouth. I could smell it..."

"The fire reached a point Thursday night, which led to mandatory and evolutions and the closure of Highway 1. Friday afternoon it erupted again"

QUESTIONS

Why do they have the power plant close to the people?

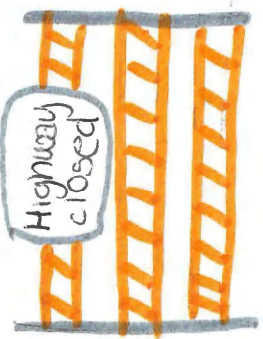
What caused the fire to begin?

FIRE AT MOSS LANDING'S POWER PLANT

MAIN IDEA

Thursday night, January 16th, a fire erupted at Moss Landing's power plant. Cause is still unknown.

Dangerous



Affected the Environment

Scary

Shocking worried

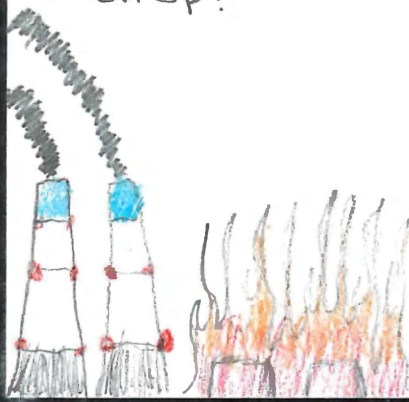


"In this particular case, we had a number of batteries that burnt, but we had some batteries that did not burn, and had we introduced water into that area, they were going to become unstable and then possibly burn," chief Mendora said.

Some not spot do remain in the steel and concrete structure which is a loss but a complete loss. Firefighters say it could be days if not weeks before crews and investigators can get in and try to determine the cause of the fire. At this time the facility is environmentally and structurally unsafe.

• what are the environmental effects?

• will the plant open back up?



MOSS LANDING FIRE!

The main idea: There was a fire in Moss Landing. The fire started on Thursday and polluted the air with harmful chemicals. The fire was at the power plant in Monterey County, CA, and ended between Saturday and Friday.

Vocabulary:

1. Battery storage
2. Power plants
3. fire
4. vista
5. facility